



Guapa AT Armchair

design Sempere#Poli Design, 2014

Lounge armchair with sled base. Structure available in lacquered steel or in chrome. Seat and backrest are in hide.



Colors and Materials

Structure



White Steel



Black Steel



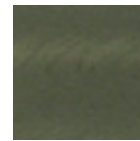
Sand Steel



Brown Steel



Grafite Steel



Industrial Steel

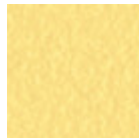
1 color



Fango Steel



Bronze Steel



Pastel Yellow Steel



Ocher Steel



Red steel

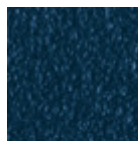


Sage Green Steel



Light blue steel

1 color



Ocean Blue Steel



Light Grey Steel

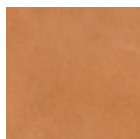


Facepowder Pink Steel



Chrome

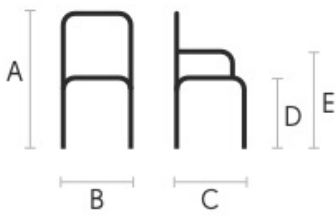
Coating



Tuscan Hide

3 Colors

Dimensions



Volumetric Details

Weight 13.5 Kg

Volume 0.44 mc

Package 1

	cm	inch
E	59	23.2
D	41	16.6
C	62	24.4
B	81	31.9
A	82	32.3

Downloads

[3D Guapa AT \(zip\)](https://www.midj.com/images/uploads/resources/guapa-at-3d.zip) - <https://www.midj.com/images/uploads/resources/guapa-at-3d.zip>

Materials Certifications

Tuscan Hide

Tuscan Hide does not fear to get aged since the oldest it gets the more unique it becomes.

It is a material deriving from animal's leather which suffer a process called "vegetable tanning" with natural tannins and with the help of some products biologically compatible whether for the dyeing or for the finishing.

Any possible imperfection, sign, scar, stain of the Tuscan hide surface are a natural characteristics which guarantees its originality.