

**MIDJ**  
INITALY

# Guapa DPB Armchair

design Sempere#Poli Design, 2014

Guapa DPB swivel and high adjustable armchair with low backrest with five-ways base in lacquered steel. Tilt mechanism integrated. It comes with white wheels combined with a white base or with chrome wheels with black edge combined with the black base. Seat and backrest are in hide.



## Colors and Materials

### Structure



White Steel



Black Steel



Sand Steel



Brown Steel



Grafite Steel



Industrial Steel

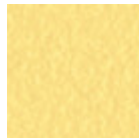
1 color



Fango Steel



Bronze Steel



Pastel Yellow Steel



Ocher Steel



Red steel

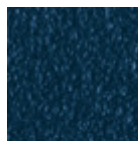


Sage Green Steel



Light blue steel

1 color



Ocean Blue Steel

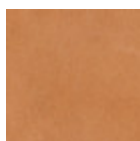


Light Grey Steel



Facepowder Pink Steel

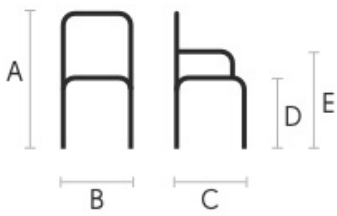
### Coating



Tuscan Hide

3 Colors

## Dimensions



## Volumetric Details

**Weight** 13 Kg  
**Volume** 0.27 mc  
**Package** 2

	cm	inch
<b>D</b>	43/57	16.9/22.4
<b>E</b>	59/73	23.2/28.7
<b>C</b>	53	20.9
<b>B</b>	57	26.4
<b>A</b>	68/82	26.8/32.3

## Materials Certifications

### Tuscan Hide

Tuscan Hide does not fear to get aged since the oldest it gets the more unique it becomes.

It is a material deriving from animal's leather which suffer a process called "vegetable tanning" with natural tannins and with the help of some products biologically compatible whether for the dyeing or for the finishing.

Any possible imperfection, sign, scar, stain of the Tuscan hide surface are a natural characteristics which guarantees its originality.