



# Guapa P Armchair

design Sempere#Poli Design, 2014

Armchair with sled base. Structure available in lacquered, chrome, pink gold or black nickel steel. Seat and backrest are in hide.



## Colors and Materials

### Structure



White Steel



Black Steel



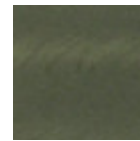
Sand Steel



Brown Steel

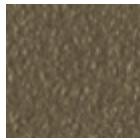


Grafite Steel

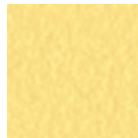


Industrial Steel

1 color



Fango Steel



Pastel Yellow Steel



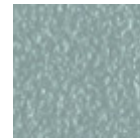
Ocher Steel



Red steel

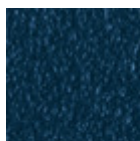


Sage Green Steel



Light blue steel

1 color



Ocean Blue Steel



Light Grey Steel



Facepowder Pink Steel



Chrome

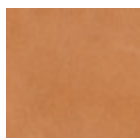


Pink Gold



Black Nickel

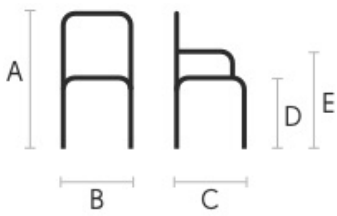
### Coating



Tuscan Hide

3 Colors

## Dimensions



---

## Volumetric Details

**Weight** 11.5 Kg

**Volume** 0.37 mc

**Package** 1

	cm	inch
A	82	32.3
B	67	26.4
C	55	21.6
D	46	18.1
E	62	24.4

---

## Downloads

[3D Guapa P \(zip\)](https://www.midj.com/images/uploads/resources/guapa-p-3d.zip) - <https://www.midj.com/images/uploads/resources/guapa-p-3d.zip>

## Materials Certifications

### Tuscan Hide

Tuscan Hide does not fear to get aged since the oldest it gets the more unique it becomes.

It is a material deriving from animal's leather which suffer a process called "vegetable tanning" with natural tannins and with the help of some products biologically compatible whether for the dyeing or for the finishing.

Any possible imperfection, sign, scar, stain of the Tuscan hide surface are a natural characteristics which guarantees its originality.