

Paul Ø120 Extendable Table

Extendable table with steel base. Wooden or crystalceramic top, matching extensions.

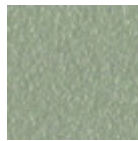


Colors and Materials

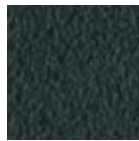
Structure



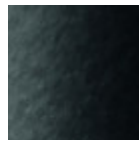
White steel



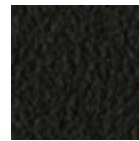
Sand steel



Grafite steel

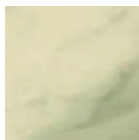


Black steel

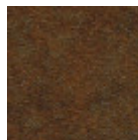


Brown steel

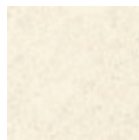
Coating



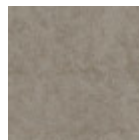
Crystalceramic with effect calacatta marble



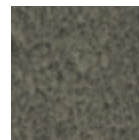
Corten crystalceramic



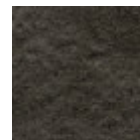
Oxide white crystalceramic



Oxide sand crystalceramic



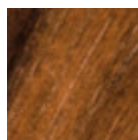
Lead crystalceramic



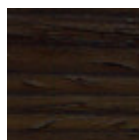
Charcoal savoia crystalceramic



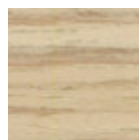
Cement savoia crystalceramic



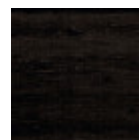
Veneered flamed walnut



Veneered wood dark oak

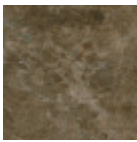


Veneered wood natural finish

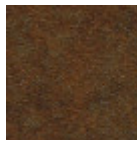


Black lacquered veneered wood

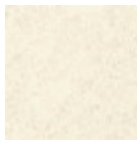
Extensions



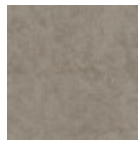
**Emperador marble
crystalceramic**



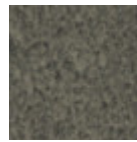
**Corten
crystalceramic**



**Oxide white
crystalceramic**



**Oxide sand
crystalceramic**



Lead crystalceramic



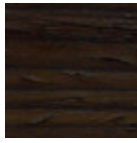
**Charcoal savoia
crystalceramic**



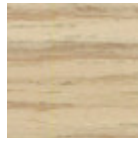
**Cement savoja
crystalceramic**



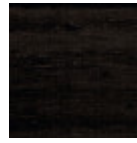
**Veneered flamed
walnut**



**Veneered wood dark
oak**



**Veneered wood
natural finish**



**Black lacquered
veneered wood**

Dimensions

Dimensions

Volumetric Details

Weight 51 Kg

Volume 0.75 mc

Package 3

Image not found or type unknown

	cm	inch
A	75	29.5
B	120	47.2
C	120	47.2
D	180	70.9