

BONALDO

Vague bookshelf

Designer: **Roberto Paoli**

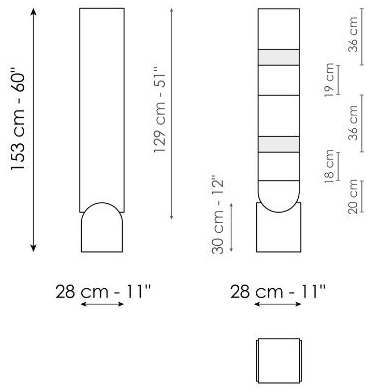


Like the other members of the family, the Vague bookshelf is characterized by the combination of concrete and metal. The metal frame rests on the concrete base and rises vertically like a totem on which several shelves are mounted at different heights to accommodate objects or books. Thanks to its

variable height and reduced dimensions, the Vague bookshelf is versatile and can be positioned in a number of places within the house, either individually or in multiple elements placed side by side.



Data sheet



Vague bookshelf

Width: 28cm

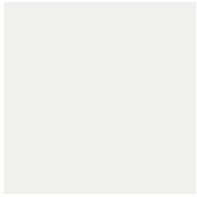
Depth: 28cm

Height: 153cm

Finishes

FRAME

Metal



Painted metal
Mat white



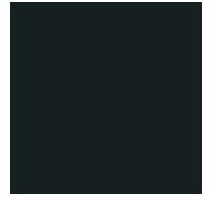
Painted metal
Mat dove grey



Painted metal
Mat brown



Painted metal
Supreme anthracite

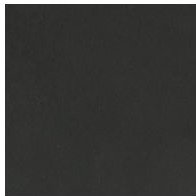


Painted metal
Mat black

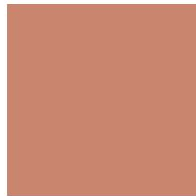
Plus Metal



Painted metal
Mat bronze



Painted metal
Mat lead



Painted metal
Mat copper



Painted metal
Mat brass

BASE

Concrete



Concrete
Grey



Concrete
Travertin look



Materials, fabrics, leathers, colors and finishes are approximate and may slightly differ from actual ones. You can find the complete collection of Bonaldo fabrics and leathers on the website

