

Guapa PX Armchair

design Sempere#Poli Design, 2014

Guapa swivel armchair with four ways trestle base in lacquered steel.
Shell in hide.

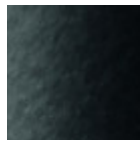


Colors and Materials

Structure



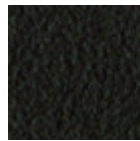
White Steel



Black Seel



Sand Steel



Brown Steel

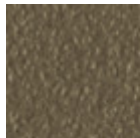


Grafite Steel



Industrial Steel

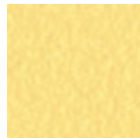
1 color



Fango Steel



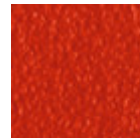
Bronze Steel



Pastel Yellow Steel



Ocher Steel



Red steel

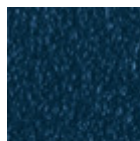


Sage Green Steel



Light blue steel

1 color



Ocean Blue Steel

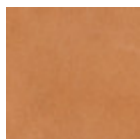


Light Grey Steel



Facepowder Pink Steel

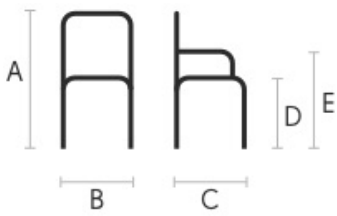
Coating



Tuscan Hide

3 Colors

Dimensions



Volumetric Details

Weight 12 Kg
Volume 0.2 mc
Package 1

	cm	inch
E	63	24.8
D	47	18.5
C	55	21.7
B	67	26.4
A	83	32.7

Downloads

[3D Guapa PX \(zip\)](https://www.midj.com/images/uploads/resources/guapa-px-3d.zip) - <https://www.midj.com/images/uploads/resources/guapa-px-3d.zip>

Materials Certifications

Tuscan Hide

Tuscan Hide does not fear to get aged since the oldest it gets the more unique it becomes.

It is a material deriving from animal's leather which suffer a process called "vegetable tanning" with natural tannins and with the help of some products biologically compatible whether for the dyeing or for the finishing.

Any possible imperfection, sign, scar, stain of the Tuscan hide surface are a natural characteristics which guarantees its originality.