



Pippi AP Lounge Armchair

design Roberto Paoli, 2019

Lounge with a four-leg base completely upholstered in fabric. Steel feet.



Colors and Materials

Structure



White Steel



Sand Steel



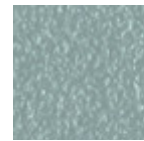
Pastel Yellow Steel



Grafite Steel



Black Steel



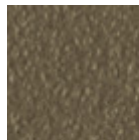
Light blue steel



Ocean Blue Steel



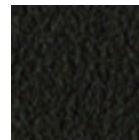
Bronze Steel



Fango Steel



Light Grey Steel



Brown Steel



Ocher Steel



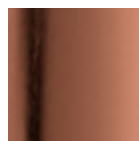
Facepowder Pink Steel



Red steel



Sage Green Steel

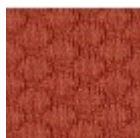


Pink Gold



Black Nickel

Coating



Visual Fabric

11 Colors

Dimensions

Volumetric Details

Weight 10 Kg

Volume 0.39 mc

Package 1

Image not found or type unknown

	cm	inch
A	75	29.5
B	59	27.2
C	66	26
D	41	16.1
E	59	23.2

Downloads

[3D Pippi AP \(zip\)](https://www.midj.com/images/uploads/resources/midj-pippi-ap-3d.zip) - <https://www.midj.com/images/uploads/resources/midj-pippi-ap-3d.zip>