

# Lea CT-S Coffee Table

design Paolo Vernier, 2019



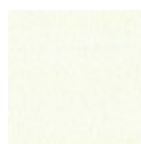
Lea coffee table with four leg base in lacquered metal. Top in wood or ceramic.

The Lea coffee table is available in three different sizes and is suitable for overlapping games.

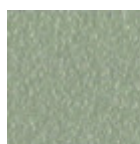
Pure and essential in shape, the Lea coffee table is perfect alone or in the original compositions of interlocking tops. Different sizes and materials create a versatile furniture solution, capable of adapting to every need and interior style.

## Colors and Materials

### Structure



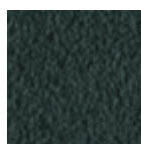
White steel



Sand steel



Pastel yellow steel



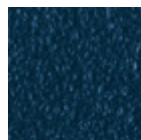
Grafite steel



Black steel



Light blue steel



Ocean blue steel



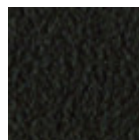
Bronze Steel



Fango steel



Light grey steel



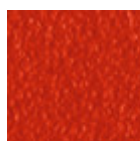
Brown steel



Ocher steel



Facepowder pink steel



Red steel



Sage green steel



Pink Gold

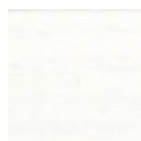


Black Nickel

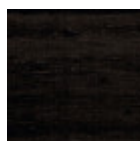


Golden bronze

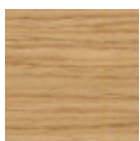
### Coating



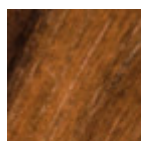
White lacquered veneered wood



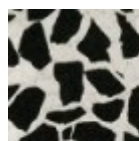
Black lacquered veneered wood



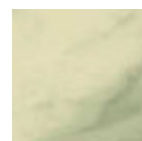
Veneered wood natural oak finish



Veneered flamed walnut

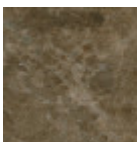


Venetian glossy ceramic



Ceramic with effect calacatta marble

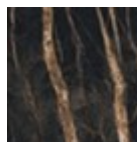
1 color



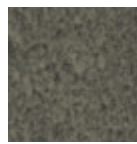
Emperador marble ceramic



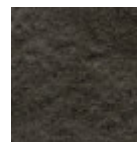
Black greek glossy marble ceramic



Noir desir glossy ceramic marble



Lead ceramic

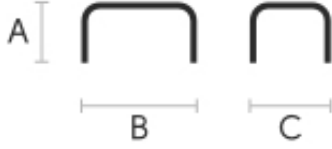


Charcoal savoia ceramic



Cement Savoia Ceramic

## Dimensions



## Volumetric Details

Weight 12.5 Kg

Volume 0.16 mc

Package 1

	A (cm) (inch)	B (cm) (inch)	C (cm) (inch)
<b>Lea CT-S (cm)</b> (inch)	40 15.7	51 20.1	51 20.1
<b>Lea CT-M (cm)</b> (inch)	40 15.7	65 25.6	45 17.7
<b>Lea CT-L (cm)</b> (inch)	34 13.4	108 42.5	39 15.4

## Downloads

[.dae Lea CT-S \(zip\)](https://www.midj.com/images/uploads/resources/3d-midj-lea-ct-s-dae.zip) - <https://www.midj.com/images/uploads/resources/3d-midj-lea-ct-s-dae.zip>

[.dxf Lea CT-S \(zip\)](https://www.midj.com/images/uploads/resources/3d-midj-lea-ct-s-dxf.zip) - <https://www.midj.com/images/uploads/resources/3d-midj-lea-ct-s-dxf.zip>

[.obj Lea CT-S \(zip\)](https://www.midj.com/images/uploads/resources/3d-midj-lea-ct-s-obj.zip) - <https://www.midj.com/images/uploads/resources/3d-midj-lea-ct-s-obj.zip>

[.stl Lea CT-S \(zip\)](https://www.midj.com/images/uploads/resources/3d-midj-lea-ct-s-stl.zip) - <https://www.midj.com/images/uploads/resources/3d-midj-lea-ct-s-stl.zip>

[.3ds Lea CT-S \(zip\)](https://www.midj.com/images/uploads/resources/3d-midj-lea-ct-s-3ds.zip) - <https://www.midj.com/images/uploads/resources/3d-midj-lea-ct-s-3ds.zip>