



Guapa H65 Stool

design Sempere#Poli Design, 2014

Bar stool with sled base and footstool. Frame available in lacquered steel or in chrome. Shell in hide. Seat height: 65cm (25.6")



Colors and Materials

Structure



White Steel



Black Seel



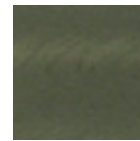
Sand Steel



Brown Steel



Grafite Steel



Industrial Steel

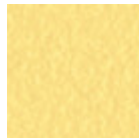
1 color



Fango Steel



Bronze Steel



Pastel Yellow Steel



Ocher Steel



Red steel

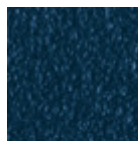


Sage Green Steel



Light blue steel

1 color



Ocean Blue Steel



Light Grey Steel



Facepowder Pink Steel



Chrome



Pink Gold



Black Nickel

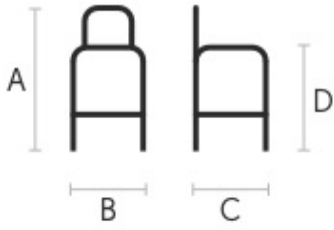
Coating



Tuscan Hide

3 Colors

Dimensions



	cm	inch
A	97	38.2
B	50	19.7
C	54	21.2
D	65	25.6

Materials Certifications

Tuscan Hide

Tuscan Hide does not fear to get aged since the oldest it gets the more unique it becomes.

It is a material deriving from animal's leather which suffer a process called "vegetable tanning" with natural tannins and with the help of some products biologically compatible whether for the dyeing or for the finishing.

Any possible imperfection, sign, scar, stain of the Tuscan hide surface are a natural characteristics which guarantees its originality.

Volumetric Details

Weight 11 Kg

Volume 0.32 mc

Package 1